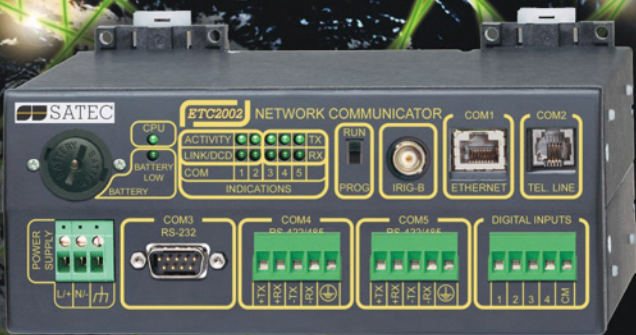


NEW

ETC2002

Internet Converter



**A communication platform that connects
you to the Internet and Ethernet
from anywhere - at anytime**

 **SATEC**
Powerful Solutions



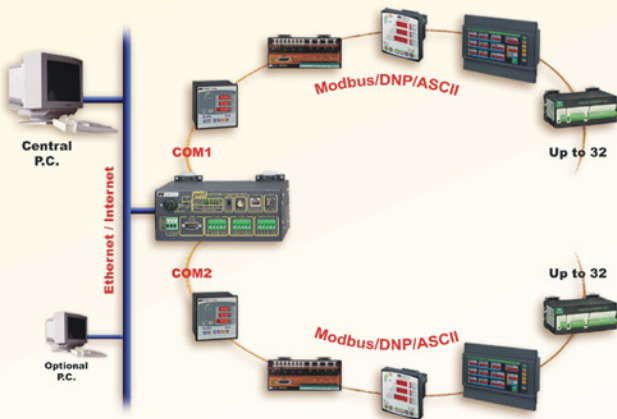


ETC

ETC Internet and Ethernet Communication M

Transparent:

Uses any SATEC TCP/IP enabled software (LabView, SCADA, PasWin with TCP/IP driver, or any application usable with ASCII/Modbus/DNP protocols) to communicate with up to 32X2 SATEC PowerMeters - or any serial port instrument - fast and transparently.

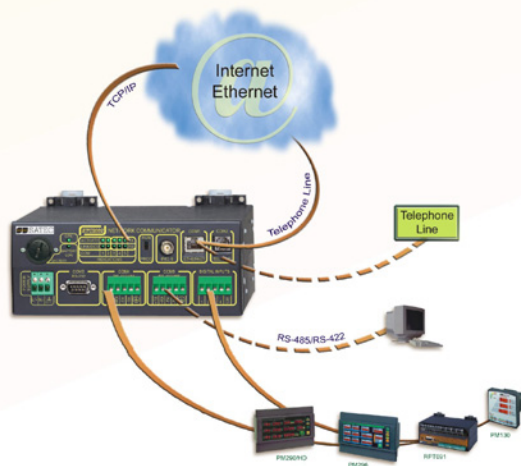


Protocol Converter:

Uses any SCADA application that can read TCP/IP Modbus or TCP/IP DNP industrial protocols to communicate with up to 32X2 SATEC Powermeters with Modbus or DNP protocol.

WWW Server:

Uses a 'smart' server to communicate with up to 32X2 SATEC Powermeters. The server is fully embedded, granting worldwide access to all Powermeter data, and provides remote control possibilities via the WEB. The user can browse easily using any WEB browser (Internet Explorer or Netscape Communicator), with no need for any special additional software.



ETC2002

Technical Specifications

Serial Communication Channels:

COM1	RS-422 / RS-485 4 wire / RS-485 2 wire communication Channel providing +TXD, -TXD, +RXD and -RXD signals.
Data Rates:	600, 1200, 2400, 4800, 9600, 19200, 38400, 115200 baud.
Connector type:	5mm pitch
Wire Diameter:	12 AWG 2.5 mm ² MAX
Isolation:	1 kV DC
COM2	RS-232 Comm. channel providing TX, RX, CTS, RTS signals.
Data Rates:	600, 1200, 2400, 4800, 9600, 19200, 38400 baud.
Connector type:	DB-9 Plug
Isolation:	1 kV DC
Optional Modem -	Embedded SocketModem™ with FAX possibilities
Data Rates:	2400, 9600, 14400, 28800 and 33600 baud
Connector type:	RJ-11 Phone Jack
Isolation:	1 kV
Protocols:	V22bis, V34, and MNP2-10, Fax Class 1 or 2

Ethernet Port:

Port Type:	IEEE802.3 Full Duplex Ethernet Port
Speed:	10 Mbit/sec.
Connector Type:	10BaseT RJ-45
Isolation:	1 kV, 2 kV

Power Supply:

Power supply type:	AC/DC switching power supply
Input voltages:	85-265 VAC, 90-270 VDC
Burden:	7-8 watt
Isolation:	2500 VAC RMS
Terminals:	5mm pitch
Wire Diameter:	14 AWG 2.5 mm ² MAX
Optional:	24 VDC, 48 VDC Power Supply

Environmental:

Operating Temperature:	-20° to +60° C
Storage Temperature:	-25° to +80° C
Humidity:	0 to 95% non- condensing

Construction:

Instrument Enclosure:	Aluminum
Enclosure Dimensions:	W 185.0 (7.3") H 75.0 (2.95") D 123.0 (4.85") 0.85 Kg. (1.87 lb)
Weight:	
Mounting:	Table top standard DIN & wall mount -optional



SATEC, Ltd.

Har Chotzyim Science Based Industrial Park
P.O.Box 45022, Jerusalem, 91450 Israel
Tel.: 972-2-541-1000 Fax: 972-2-581-2371
e-mail: satec@satec.co.il www.satec.co.il

SATEC, Inc.

One Springfield Ave., Summit, NJ 07901
Tel: (908) 608-0500 Fax: (908) 608-0535
e-mail: satec@oksatec.com www.oksatec.com

Distributor

 **SATEC**
Powerful Solutions